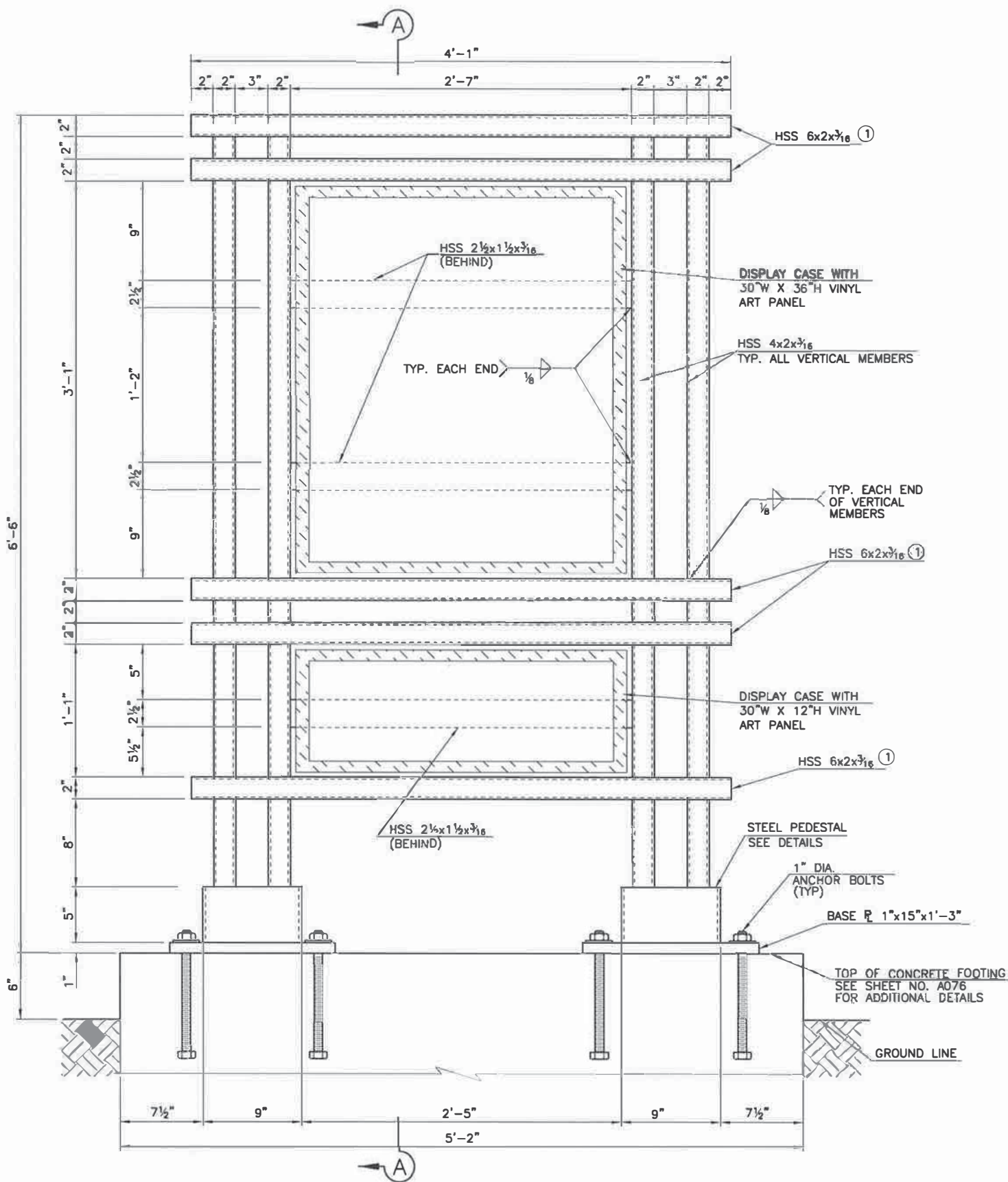


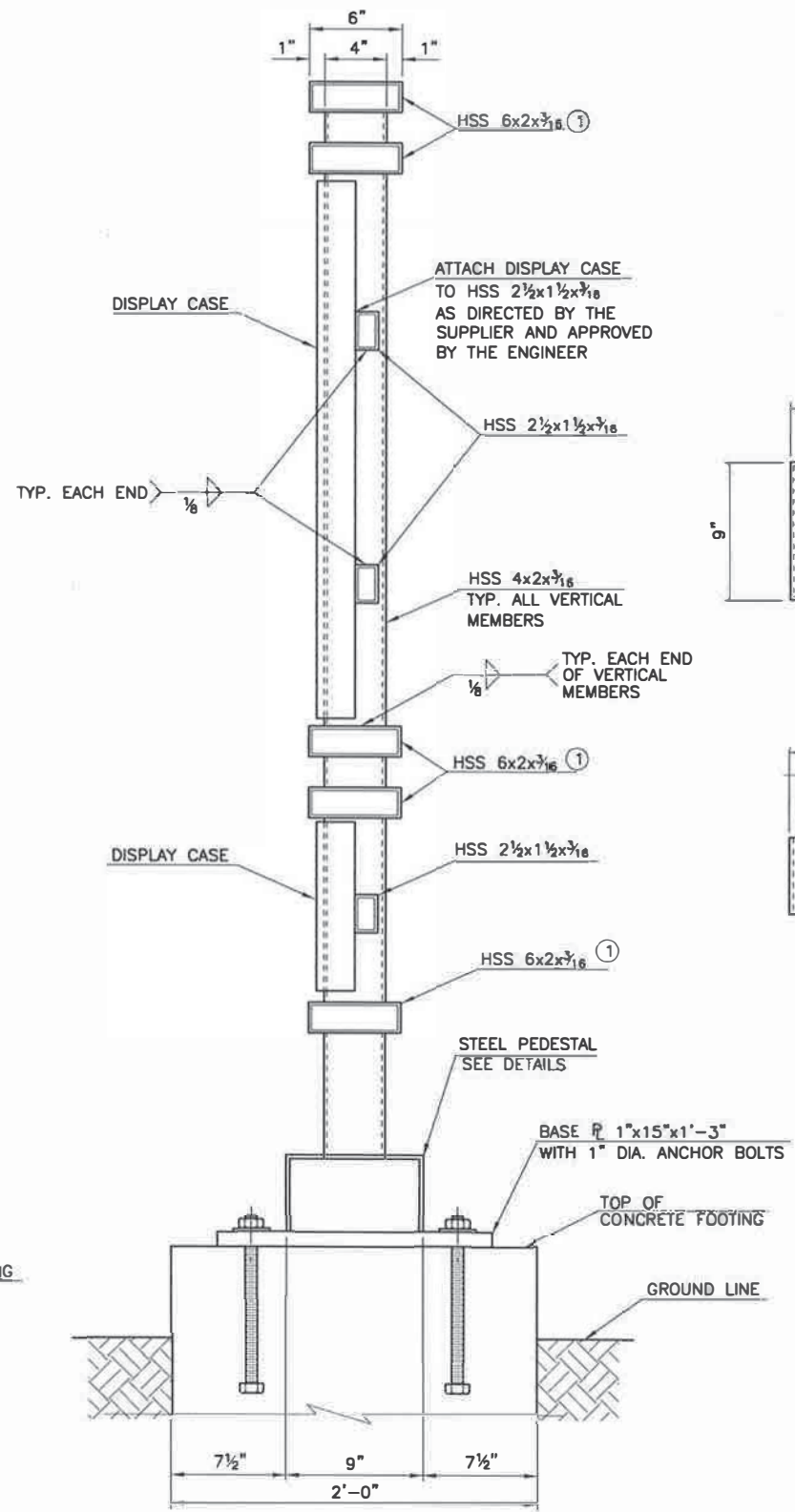
FED. ROAD DIST. NO.	STATE	PROJ. NO.	FISCAL YEAR	SHEET NO.
6	OKLA.	21860(04)	2016	B08
REVISIONS				
NO.	DATE	DESCRIPTION		

DESIGN DATA
 CLASS A CONCRETE $f'_c = 3,000$ psi
 REINFORCING STEEL $F_y = 60$ ksi
 STRUCTURAL STEEL M270 $F_y = 50$ ksi
 HSS RECTANGULAR SECTIONS-A500, GRADE B $F_y = 46$ ksi

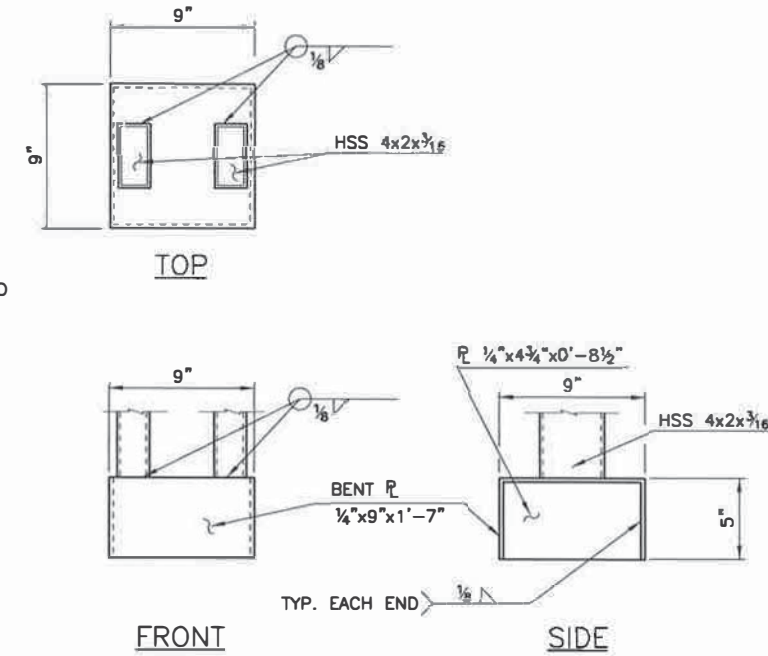
① HSS 6x2x $\frac{3}{16}$ SHALL HAVE ENDS CAPPED WITH A $\frac{1}{8}$ "x2"x0'-6" WELDED TO EACH END. TWO PLATES REQUIRED PER HORIZONTAL MEMBER.



FRONT ELEVATION VIEW



SECTION A-A



STEEL PEDESTAL DETAILS



DAVID M. NEUHAUSER, P.E.
 OKLA. REG. NO. 19980

DESIGN: CPY	SH-33 OVER COTTONWOOD CREEK	LOGAN COUNTY
DRAWN: CPY		
CHECKED: CPY	HISTORICAL BRIDGE SIGNAGE DETAILS	
APPRVD: CPY		
JOB PECE NO. 21 860(04)		SHEET 1 OF 3
CP&Y		SHEET NO. B080

1:56:38 PM 8/17/2016
 c:\pwworkspace\ANSI\Bibli\pwr\Active\Projects\000T15304.00\000T15304.00\Drawings\15304-01\Kiosk-Sht-1.dgn
 jenkins
 c:\pwworkspace\ANSI\Bibli\pwr\Active\Projects\000T15304.00\000T15304.00\Drawings\15304-01\Kiosk-Sht-1.dgn